



**大森みのり幼稚園** 東京都大田区  
Omori Minori Kindergarten [Ota-ku, Tokyo]



## 緑の風を全身に感じる都会の一角

そこは子どもの育ちを見守り、変化し続ける豊かな森

園長 藤澤光徳先生、副園長 藤澤普子先生のお話から

「たくさん体を動かすことができ、たくさん感性を磨くことのできる、子ども達が目を輝かせる場所にするために、熱意と工夫で、もっともっと園舎も園庭も、子ども達の好奇心を満足させる遊び場にしたい」といつも考えている園長先生。

そして幼稚園のあらゆるスペースが、保育にどう活用できるかが検討され、大型木製遊具を中心とした「アスレチック広場」、水と砂に思う存分ふれられる「びっくり山とこもれびデッキ」、新たな身のこなしを経験できる「ふたつ山と忍者山」、芝の緑が美しい「みどりの広場」と、たくさんの素敵な遊び場が生まれてきました。

最初に手掛けた創立50周年を記念してできた「アスレチック広場」は、「もったいない」の精神で既存の遊具に木のぬくもりを増やしてリニューアルし、屋根を付けて隠れ家をつくり、「鳥の巣」を経由した吊り橋と「山のぼりスロープ」の完成で、園舎とつながった大きな回遊性と挑戦意欲をかきたてる大立体遊空間になりました。他の園庭もつくり込むほどに、それぞれの特徴が際立ってきています。そしてどの園庭でも、子ども達はびっくりするほどの挑戦意欲をもち、いろんな遊びを創造し、自分のやりたいことと居場所を見つけられた笑顔でいっぱいです。

さらに「自分自身も園庭の緑に癒される」と園長先生が語られているとおり、シンボルとなる大きな大きなイチョウの木を始め、多くの木々と草花、そしてさまざまな種類の実りが表現する四季の変化によって彩られ、そこに暮らすものすべてに潤いを与えています。

大森みのり幼稚園の門は、一歩くぐると都会の喧騒が消え、子ども達が「体はたくましく、感性は鋭く、頭脳は賢く」育つ場所への入り口です。

At a corner of the city where we feel nature's breeze with our entire body. An ever-changing forest watches over individual children's growth.

Interview with Mitsunori Fujisawa (Principal) and Hiroko Fujisawa (Vice-principal)

Principal Fujisawa is constantly considering improvements to the playgarden and school building. He said, "I want to create a playgarden where children can move their bodies freely, develop their sensitivities, and be excited about being outside. Our school should be a place that satisfies the children's curiosity."

They considered the entire school site with an eye toward ideal use for the children's development. Through discussions, they designed attractive spots such as the Athletic Square, which features large wooden equipment, Surprise Mountain & Sunshine Deck, where children enjoy playing with water and sand, Twin Peaks & Ninja Mountain, where children can experience new ways of moving their bodies, and Green Square with its beautiful green lawn.

Their first project was Athletic Square, which commemorated the school's 50th anniversary. Reusing existing equipment, they added wooden material and placed a roof to make a hideout. They also made a suspension bridge via a bird's nest, and a mountain climbing slope, which creates a large circuit connected to the school building, to encourage the children to explore and grow. Other spots have become distinctive as they were improved. The common thread in the design is that it encourages the children to explore the new, create a wide variety of activities, and feel the joy of discovery.

As the principal said, "I am also calmed by the verdure of the playgarden," there are many trees such as a large symbolic ginkgo tree, flowers, plants, and fruit in the playgarden. They show the children and teachers the beauty of the seasonal changes and create a comfortable environment.

When we enter the gate of Omori Minori Kindergarten, we are separated from the noise of the big city and nestled in an oasis where children can exercise, develop their sensitivities, and grow.

## 園舎と遊具のつながりは学びと遊びの一体感を生み出す

Integration of learning and play through the connection of the school building and playgarden equipment

### アスレチック広場 / Athletic Square

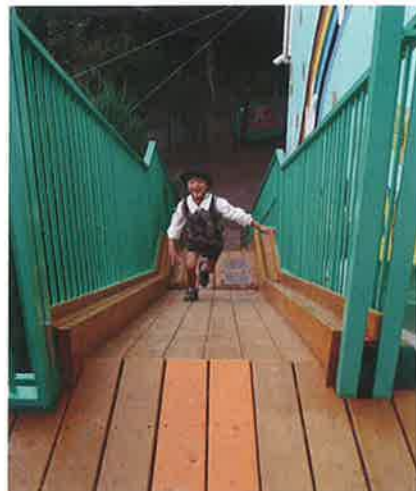




トランポリン / Trampoline



屋根裏部屋 / Attic



山のぼりスロープ / Mountain Climbing Slope



鳥の巣 / Bird's Nest

「アスレチック広場」ができるまで / Background of the Athletic Square



以前の園庭：既存の鉄製遊具 / Former Playgarden: Existing iron playgarden equipment



木製の要素を取り入れてリニューアル / Remodeling with the incorporation of wooden elements.



屋根裏部屋を追加 / Adding an attic.



園舎とつながり、回遊性のある大きな遊びの空間ができた / Connected to the garden building, a great circuit of playgarden activities is created.

土や水や風、草木や木々や実り、そしていろんな生きものとふれあう場所

Encounter soil, water, wind, plants, trees, fruit, and many forms of life



びっくり山とこもれびデッキ / Surprise Mountain and Sunshine Deck

「今の子は整備されたところしか歩いていないことが多いでしょ。だからバランスを崩したり、ぬかるみに足をとられたり、滑り落ちそうになってヒヤリとする、そういう微妙な身体感覚の体験をすることが、小さい子ども達にとっては本当に大切なことだと思うの」と語るのは副園長先生。

山砂をたっぷり盛り、ガチャポンプで水流れをつくり出すこの砂山では、地面の凹凸に合わせた柔軟な身のこなしを鍛え、掘る・埋める・形を変えるなどの新しい遊びを発想し、発見している子ども達。その時のびっくりした時の感性を大切に、遊び込んでほしいという想いから「びっくり山」と名付けられました。

Vice-principal Hiroko Fujisawa said, "Children growing in urban environments have few opportunities to experience nature, opportunities to develop their strength and agility through playtime activities."

At this sand mountain, water flows from the Gacha Pump and many forms of life can be seen. Children develop physical agility by negotiating the irregular surface of the ground, discover new activities such as digging and molding shapes. This play spot was named "Surprise Mountain." It is a place where children can experience the feeling of surprise and excitement as they play to their heart's content.



**ランダムフェンスとこもれびデッキ / Random Fence and Sunshine Deck**

大きなサクラの木の下には、こもれびが踊るデッキがあります。ここはフェンスにも植物が添えられ、子ども達の憩いの場となっています。

Sunshine deck is under a large cherry tree. Children gather here to relax surrounded by fences covered with greenery.



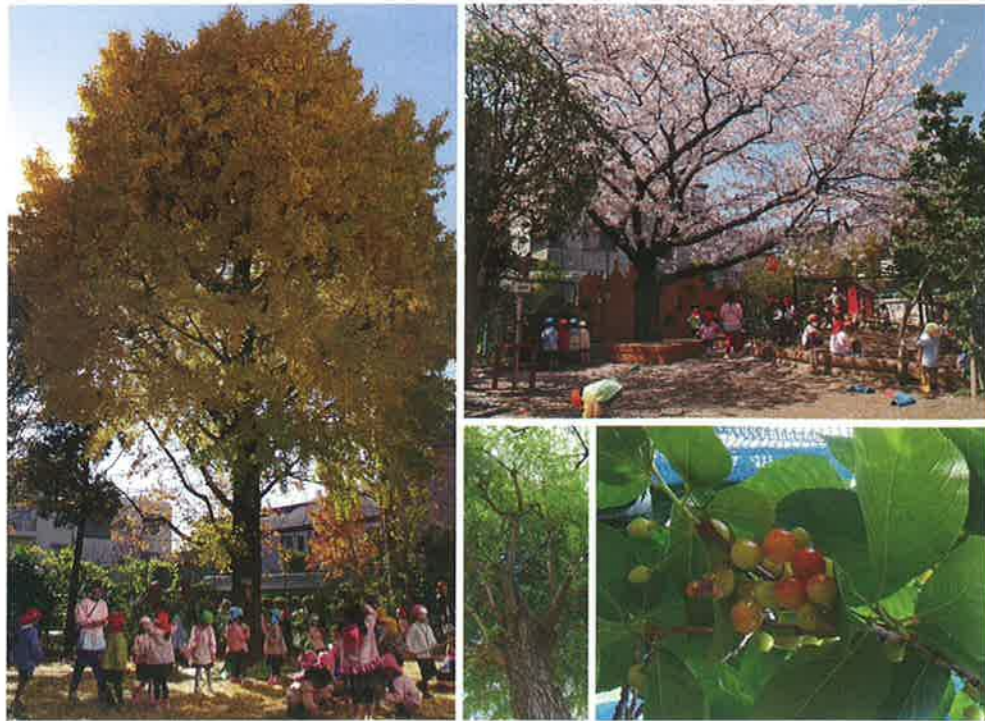
ガチャポンプ / Gacha pump

**ビオトープ / Biotope**

春、カエルの産卵とオタマジャクシ。夏、サンショにはアゲハ蝶の幼虫とその羽化、さらにクスノキにはアオスジアゲハやシオカラトンボ。秋はカマキリと冬眠前のカエル。そして冬、池に張る氷。池とその周りの木々が静かに生きものを育てています。

Frogs lay eggs, and tadpoles emerge in the spring. We see swallowtail worms on Japanese pepper trees, and Graphium sarpedon and dragonflies on camphor trees in the summer. We see praying mantis and frogs before hibernation in autumn; and we see the ice that covers the pond in winter. The pond and surrounding trees nurture many forms of life.





**大イチョウとサクラ / Great Ginkgo and Cherry Trees**

大田区の保護樹木である2本の木。この園のシンボルであるイチョウは、アスレチック広場とびっくり山の真ん中にあり、デッキのサクラの木とともに、子ども達に季節の移り変わりを告げています。

The great ginkgo and cherry trees are protected by Ota Ward. The great ginkgo tree, the symbol of the kindergarten, grows in the middle of Athletic Square and Surprise Mountain. It shows seasonal changes to the children.

**「びっくり山」ができるまで / Background of Surprise Mountain**



以前の園庭：のびのびと遊べる空間のためにプールを移設 / Former playground: Relocating the pool to create a space where the children can play freely.



UniMiniと土管トンネルなど配置 / Installation of UniMini and soil tunnel, etc.



山砂を増量 / Increasing mountain sand.



さまざまな植栽とともに、ガチャポンプ・築山・登り木を設置 / Installation of the Gacha pump, hills and climbing trees with a wide variety of plants.

胸いっぱい緑の香を感じてほしい

We hope the children take the greenery into their senses



園児下駄箱では季節の緑が迎えてくれる / Seasonal greenery greets you in the kindergarten shopping bag.



右 / ランダムフェンスと花壇：園の顔にもなる看板とその周辺も自然でいっぱい。通りかかる方にも園の気持ちが伝わる。左 / 以前の入り口 / (Right) Random fences and flower beds: Signs and its surroundings are full of nature. The feeling of the garden is transmitted to passersby. (Left) Previous entrance

「この門をくぐる時、子ども達が胸いっぱいになるくらい緑の香を感じてくれたらいいなあ」と園長先生。その言葉通りに豊かさを湛えた大森みのりの自然は、きっと子ども達の成長に大きな実りを与えてくれるに違いありません。

The principal said, "I hope the children take the greenery into their senses when they enter this gate." The wealth of nature at Omori Minori Kindergarten provides the perfect environment for growth.

この植物であふれた里山には野性的な遊びが今か今かと待っている  
Nature activities await children in this area filled with plants

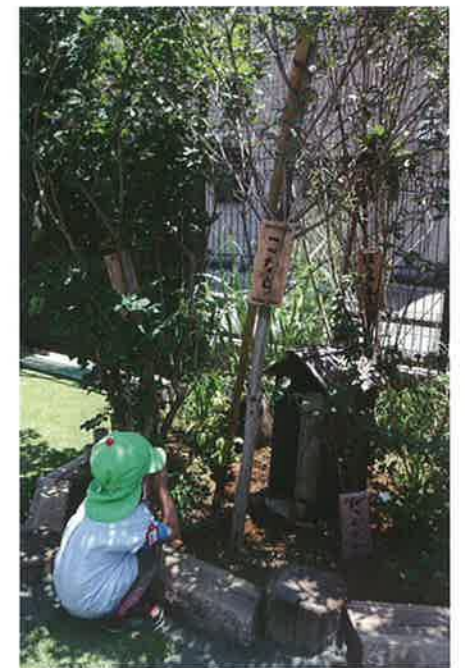


太鼓橋の向こうには富士山が／Mt. Fuji is behind the bridge.

ふたつ山と忍者山／Twin Peaks and Ninja Mountain

大きく枝を広げた木々や、さまざまな花や実りであふれたコースをゴーカートに乗って疾走する子ども達の顔は、みな爽快感にあふれています。コースの真ん中にはハンモックや太鼓橋があって、それぞれの「やりたい」に心ゆくまで応えてくれます。またわくわくするほど、子ども達の挑戦意欲を引き出す忍者山には、両手をかけ、裸足で足場を探しながら全身を使って登る石垣と、制覇したものが体験できる忍者小屋が待っています。原体験を体験した子ども達は、心も体もたくましく、そして自然の変化を感じ、五感を研ぎ澄ましていきます。

Children riding on go-karts look so happy running the course filled with trees whose branches stretch out and a wide variety of flowers and fruit. In the middle of the course, there is a hammock and arched bridge that the excited children play on. Ninja mountain also attracts the children. It encourages them to climb. Ninja Mountain features a stone wall that challenges the children to identify foot- and handholds, and a Ninja hut on the top where those who have successfully climbed the stone wall can enter. Experiencing the achievement, children become mentally and physically more confident, feel the changes in nature, and develop their sensitivities.





忍者山と忍者小屋 / Ninja Mountain and Ninja Hut



空中ケーブル / Aerial Cable

園庭の端から端を横切る長くて迫力満点のこの空中ケーブルに、2歳児までもが挑戦します。

This aerial cable is long and crosses the playgarden from one edge to the other. Even the two-year old children try this thrilling ride.

「ふたつ山」ができるまで / Background of the Twin Peaks



工事前の空き地 / Vacant ground before the start of construction



第一期工事 サイクルロード完成 / The 1st phase of construction - Completion of a cycling road



駐車場だった場所は、約5年をかけて自然豊かな里山になった  
A parking lot was made into a natural miniature satoyama over a period of about 5 years.



緑の眩しいこの園庭には小さい子ども達の遊びが生まれる

Small children are comfortable playing on this playground full of greenery



## みどりの広場 / Green Square

緑の芝に覆われたさわやかな風と木々に包まれたこの園庭は、小さな子ども達の「初めて」が安心して体験できるようにつくられています。砂場にはふたがあり、使わない時には安らぎの場所にもなり、遊具も登る・滑る・揺れる・もぐるなどいろんな身のこなしを体験できます。

Covered by a green lawn and surrounded by trees and refreshing breezes, this playground was made to give small children a safe and secure environment for their first experience in nature. The sandbox is covered with a lid. When it is not used, the covered sandbox can be used for relaxation. Small children can also experience climbing, sliding, swinging, and burrowing.





小さな子用の遊具 / Playgarden Equipment for Smaller Children

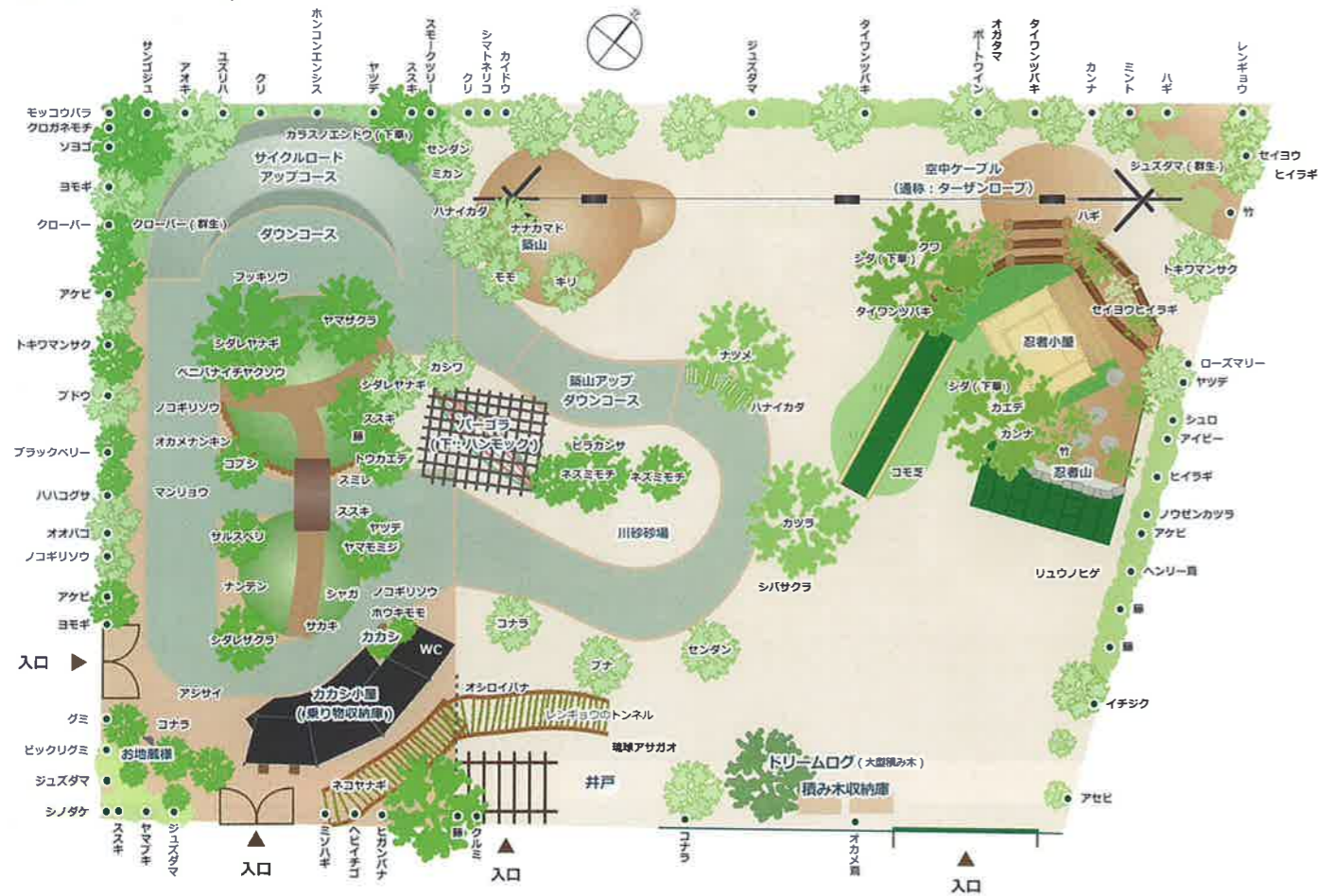


ふたつきの砂場 / Sandbox with a Lid



# 大森みのりの木とふれ合い、木と学び、木と生きる Playing, learning, and living with trees at Omori Minori Kindergarten

## 植栽 / Planting



# Need for Playgarden Design

Aneby proposes comfortable playgarden designs that fully utilize the natural environment.

In Germany and other countries in northern Europe, many kindergartens do not have buildings. These are called forest kindergartens. The concept is that experiences in early childhood are very important for future growth. Children's experiences at nursery schools and kindergartens have a significant influence on their development. If they are surrounded by a wealth of nature, they can accumulate experience that is desirable for the nurturing of creativity. However, due to the unstable weather and population concentration in urban areas, it is difficult to find forests like those that are in northern Europe near nursery schools and kindergartens in Japan. Fortunately, many Japanese schools have a playgarden, and we thought it would be possible to provide the desirable environment for children with playgarden design. We believe our mission is to design playgardens suitable for the environment of individual schools to nurture fitness and sensibility.

## Extract from the Approaches to Kindergarten Design and Specifications

We should think of a kindergarten playground as a classroom without a roof. (\*\*snip\*\*) It is a place to experience and learn where children develop the basic life habits, knowledge and abilities that they need for healthy growth. In other words, it is the place to experience education regarding health, society, nature, language, music and rhythm, and painting. With this in mind, there should be no differences among playground, classroom, and gym. (III. Playground Design, 1. Characteristics of Playground, 2. Playgrounds at Kindergartens)

Space for fixed equipment such as swings and slides, places for trees and plants, and flat square spaces are essential for kindergarten playgrounds. These must also be designed for consistency from the viewpoint of children's activities, teaching, and management. In other words, it is desirable that a kindergarten playground consist of three different areas: a play area with fixed equipment, a flat area, and an area that is natural, like a forest, hill or river. In other words, places for equipment, places to play with friends, and places to play with nature. (III. Playground Design, 2. Playground Designing, 1. Factors that Determine Designs, B. Forms)

Source: Approaches to Kindergarten Design and Specifications. Edited by Japan Kindergarten Facility Council. 1957. P.22-30. Provided by AOKI Early-childhood Education Research (AEER)

Designing playgardens where children can develop physical fitness and motivation

The basis of the physical fitness and motivation that each child needs for the future is developed during childhood. Preparing a playgarden environment where children can enjoy play utilizing their entire body and build the habit of trying until their goal is achieved is the responsibility of adults. We should blend nature with a well-designed playgarden to increase the value of their activities.

Playgarden equipment that promotes mutual learning

Most nursery schools and kindergartens provide group education. Teachers give instructions to children, which is insufficient to develop children's motivation to try challenging tasks, to increase their courage to fight against bullying and unfairness, and to develop leadership skills.

These abilities are usually nurtured while children play freely among their peers. It is essential, therefore, to have playgarden equipment that encourages children to try, compete, and cooperate with friends.

Designing a playgarden that nurtures sensibility

The essential ability of Japanese children is thought to be sensibility that leads to creativity. In Sweden, preschools are called daytime homes. Homes consist of buildings and gardens, and they think that gardens are essential to developing mental strength and sensibility. It is desirable to design beautiful playgardens fully utilizing nature and equipment that develop imagination and creativity.



"Hags takes play seriously" is the guiding principle for this Swedish company. Founded in 1948, the practicality and durability of HAGS playground equipment has helped it grow into a company that exports to 70 countries in Europe and other spots around the globe. Specifications for the materials used in every piece of playground equipment demand the highest standards, and individual parts can be combined freely for different purposes. The parts can be adjusted to accommodate conditions, and extension and alteration are always possible. To create the circumstances that allow children to play as naturally as if were in nature and encourage them to try new skills, HAGS continues to insist on the highest standards as it develops prototypes to ensure improvements that realize safe and secure functions.

## Five Basic Principles of Playgarden Development

### 1.Safety

It is essential to consider safety, which ensures an environment in which children can concentrate on activities. ANEBY conforms to EN-1176 and 1177, the European safety standards for playgarden equipment. These standards have a long history and have achieved good results. In accordance with Accident Analysis Stage (See page 168), we eliminate hazards from the playgarden environment by designing a structure and environment that prevent accidents while encouraging children to explore new challenges.

### 2.Functionality

Safe playgarden equipment does not always mean good playgarden equipment. Equipment supports growth, so it should include the function of improving physical development. In addition to safety, therefore, it is very important to confirm that the equipment is attractive enough to encourage children to try, that it is sufficiently durable for repeated daily use, and that it can be extended through additions.

### 3.Design & Creativity

It is equally important that the equipment's structure and location make it easy for children to imagine stories, and that its design promotes the development of creativity. It is also important that the equipment is in harmony with the surrounding natural environment. What adults think is beautiful, children also think is beautiful.

### 4.Quality

Activities create the culture of the school and the playgarden provides the space to learn. Therefore, it is important that the playgarden has appropriate materials and textures. It is also important that the playgarden equipment conforms to ISO 9001, is easy to maintain and that parts are easily replaceable when worn or broken.

### 5.Environmental adaptability

We ensure that equipment materials are free of substances that may be harmful if touched or ingested. We also confirm that the materials do not produce hazardous substances in the event of flood or fire, and that they are environmentally friendly.

## Seven Elements Required for Playgarden Development

To ensure that the attractiveness of the playgarden is sufficient to motivate children to explore new challenges, the following seven elements are essential:

### 1.Imitability

Enabling children to join in play by allowing them to imitate what others do.

### 2.Contingency

Enabling a variety of new movements and the pleasure of discovering new things.

### 3.Competitiveness

Enabling children to make and follow rules, and enjoy the process of reaching goals.

### 4.Risk

Enabling challenging activities and the pleasure of achievement.

### 5.Privacy & Singularity

Enabling space for children to be alone or with friends without direct supervision.

### 6.Circularity & Repeatability

Enabling routes and mechanisms that allow children to repeat what they enjoy.

### 7.Dizziness & Fascination

Has an element to temporarily numb the senses.

## As travelers in the world, a good start from a playgarden makes the journey more fulfilling.

*The months and days are the wayfarers of a hundred generations, and the years that come and go are also travelers.* (translated by Hiroaki Sato)

In the Edo Period (1603-1868) when Genroku Culture flourished, the Japanese poet Matsuo Basho (1644-1694) wrote this in the introduction to his *Oku no Hosomichi* (The Narrow Road to the Deep North). He said, "Our life is like a journey in this tempestuous period. If we think our individual life is a moment of the long history of humanity, we can feel calm and peaceful." This was quoted from a poem written by Li Bai (701-762) in the Tang dynasty period in China.

If we apply this poem to the modern world, travelers include vessel and aircraft crews, people traveling around the world for business or pleasure, and everyone else who lives on this earth.

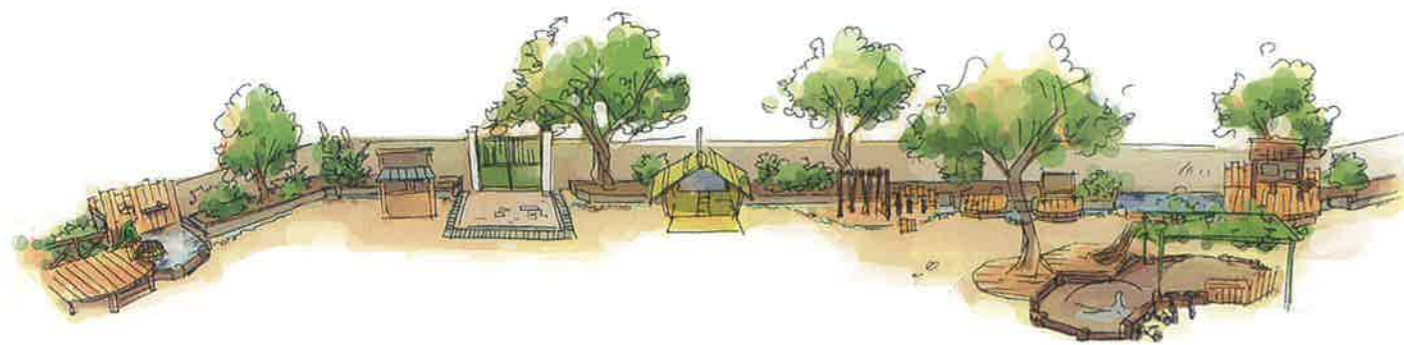
For this reason, we need to seriously consider the future of the earth, follow the Paris Agreement adopted by the 21st session of the conference of the Parties (COP 21) to the United Nations Framework Convention on Climate Change, and nurture the spirit of love for the earth by stopping our destruction of the environment.

Meanwhile, based on progress in the study of the brain supported by the development of artificial intelligence (AI), it is understood that exercise utilizing our five senses are most important for the intellectual development. Having a playgarden surrounded by nature, including animals, insects and plants, is desirable for developing the five senses.

In other words, a desirable playgarden has an ever-changing environment of weather, temperature, animals, and plants that is a space where children can play peacefully with nature.

Playgarden equipment with some height differences promotes a wide range of movements that help children to naturally recognize that gravity may cause risk. This enables them to avoid serious accidents and nurtures their physical strength through active play.

To guarantee such an environment in which children can start their life leads to the happiness of all those living and traveling on the earth.



# Growing Playgarden for Starting Well

ANEBY CO., LTD. [Editing and writing]

## Growing Playgarden for Starting Well

Issued on February 12, 2018

Editing and writing / ANEBY CO., LTD.  
[www.aneby.co.jp](http://www.aneby.co.jp)

Translation / AA International Co., Ltd.  
Publisher / Takashi Marumo

Publishing office / Marumo Publishing Co., Ltd.  
#708 Nanpeidai Asia Mansion  
4-8 Nanpeidaicho, Shibuya-ku, Tokyo 150-0036  
TEL. +81-3-3496-7046 FAX. +81-3-3496-7387  
Web: <http://www.marumo-p.co.jp/>

Editing & copywriting / Shiori Saito

Photos / Yoichi Miyahara [p1-2, p23, p33 upper right,  
p34, p35 upper left and right, p36-37, p38 lower right,  
p42-43, p45 upper right]

BLUESTONE studio: Hiroyuki Takada [Certified Center for  
Early Childhood Education, Fukui Kosei Kindergarten,  
Enjoji Nursery School], Sakiko Yoshizawa [Kodatsuno  
Zenrinkan Kodomoen]

Illustration / Megumi Sato

Cover & text page design / Hiroyuki Marumo

Printing & bookbinding / Loyal Planning Co., Ltd.

©2018 ANEBY CO., LTD.  
ISBN 978-4-944091-60-7  
Printed in Japan  
All Rights Reserved.